

***2012 Annual Report to the
Trustees of
The Pat Freestone Pension Scheme***

Prepared by:



Index

1. *Introduction*
2. *Pension scheme return*
3. *Inflation report and outlook for 2013*
4. *Economic and markets report*
5. *Newsletter*

1. Introduction

We are pleased to enclose our annual report to the Trustees.

This report provides a copy of our tax submissions to HM Revenue & Customs on your behalf. Please take the time to review this and advise us of anything that you are not in agreement with.

In addition to this, we have also prepared the following for you.

- Inflation report and outlook for 2013
- Economic and markets report
- A copy of our most recent newsletter

You should also receive our tri-annual newsletter from our pension consultancy team. If you are not receiving this, please let us know.

2. Pension Scheme Return

The pension scheme return provided to HMRC must end after 6th April 2011 and before 5th April 2012.

Pension Practitioner .Com has submitted the following disclosures:

Details

| | |
|--|----------------------------------|
| Pension Scheme Tax Reference | 00085939RW |
| Pension Scheme Name | The Pat Freestone Pension Scheme |
| Is the scheme an Occupational scheme? | Yes |
| Tax Year ended | 05 Apr 2012 |
| Date submitted | 22 Jun 2012 |
| Submitted by | Pension Practitioner.Com Ltd |
| Scheme Administrator | Mrs Katherine Lucy Freestone |
| Amended Return | No |
| Accounting Period | 06 Apr 2011 - 05 Apr 2012 |
| During this period, was the aggregate of payments to and from the scheme greater than £100,000? | No |
| Specify the aggregate of payments to and from the scheme | £16228 |
| At the end of this period, did the scheme have assets with a total value before pension liabilities greater than £400,000? | Yes |

Connected Parties

| | |
|--|----|
| At any time during the period from 06/04/2011 to 05/04/2012 did the scheme either directly or indirectly own assets that it had acquired from either: a. a sponsoring employer or any person connected with that employer? or b. a person who was a director of or a person | No |
|--|----|

connected to a director of a close company that was also a sponsoring employer?

or

c. a person who was either a sole owner or partner or a person connected with the sole owner or partner of a business which was a sponsoring employer?

or

d. a member or person connected with a member?

Cash and Bank Information

| | |
|---|---------|
| Total amount of all cash and bank balances at the beginning of the period | £397922 |
| Total amount of all cash and bank balances at the end of the period | £74171 |
| Total amount of interest credited to these accounts | £12307 |

Arms Length Transactions

| | |
|---|--------------|
| Total cost or market value of any assets owned at the end of the period | £1004150 |
| Specify whether this amount is | Market value |
| Total amount of income from assets received | £35483 |

There were no tax payments due during the scheme year.

No enquiries at the date of this report have been raised by HMRC or the Regulator.

Pension Scheme Event Report

Summary

| | |
|-------------------------------|----------------------------------|
| Pension Scheme name: | The Pat Freestone Pension Scheme |
| Pension Scheme Tax reference: | 00085939RW |
| Tax Year ending: | 5 Apr 2011 |
| Submitted date: | 31 Jan 2012 |
| Last amended date: | N/A |
| Submitted by: | Pension Practitioner.Com Ltd |
| Scheme Administrator: | Mrs Katherine Lucy Freestone |

Reportable Fund Movements

This is a list of all the reportable fund movements in this Event Report so far.

You have indicated the scheme is treated as not having made a scheme chargeable payment - income from taxable property

You have indicated the scheme is treated as not having made a scheme chargeable payment - gains from taxable property

You have indicated the scheme is treated as not having made a scheme chargeable payment - failure to make a minimum payment from an alternatively secured pension fund

| Event | Fund Movements | Members |
|--|-----------------------|----------------|
| Transfers to a qualifying recognised overseas scheme | 2 | 1 |

Member Overview

| <u>Member's name</u> | <u>Transfers</u> | <u>Totals</u> |
|----------------------|------------------|---------------|
| Mr Patrick Freestone | 2 | 190,646 |

Transfer Details

| | |
|--|-------------------|
| 1. Date of transfer | 10 May 2010 |
| Total amount of sums or assets transferred | £95323.00 |
| Name of the qualifying recognised overseas pension scheme | PKFree Super Fund |
| Country or territory under the law of which the receiving qualifying recognised overseas pension scheme is established and regulated | Australia |
| 2. Date of transfer | 2 Jul 2010 |
| Total amount of sums or assets transferred | £95323.00 |
| Name of the qualifying recognised overseas pension scheme | PKFree Super Fund |
| Country or territory under the law of which the receiving qualifying recognised overseas pension scheme is established and regulated | Australia |

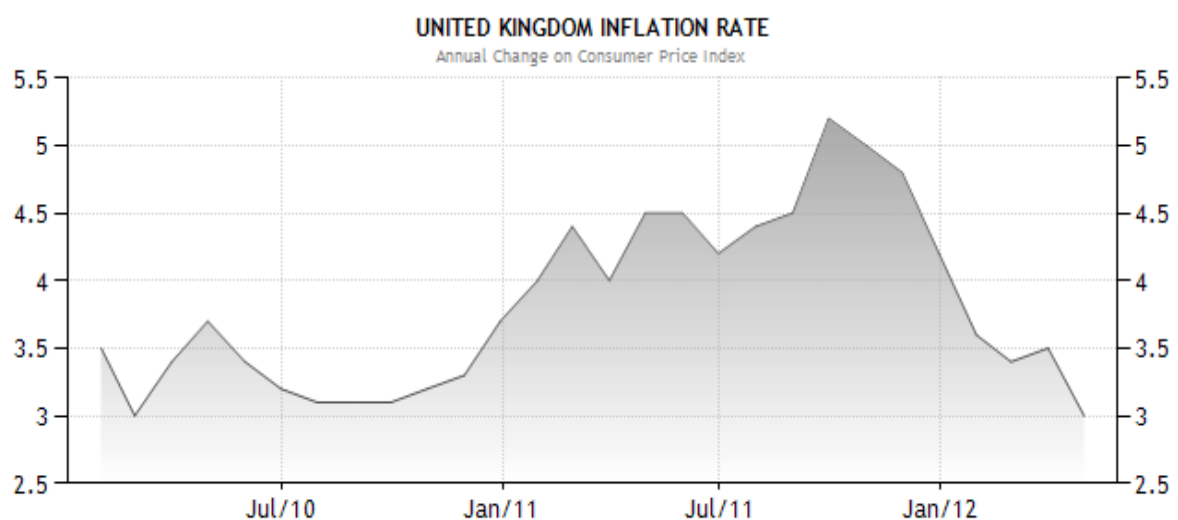
3. Inflation Report 2012 and 2013 Outlook

It is important to consider the effects of inflation on pension funds to ascertain any real growth in a pension scheme. Simply put, if your pension fund return over the tax year exceeds that of inflation your fund has grown in real terms and has maintained purchasing power.

CPI and RPI measure change in the prices charged for goods and services bought for consumption in the UK. Prices are recorded monthly for a typical selection of products (referred to as the 'basket of goods'), using a large sample of shops and other outlets.

From April 2011 the Government has transferred pension increases to the Consumer Price Index (CPI) measure which in the Treasury's own words "...is designed to take account of the fact that consumers tend to shop around, switching to cheaper alternatives when prices of similar goods change." However in doing so pensioners purchasing power diminishes as on average, you might expect CPI inflation to be roughly 0.5% to 0.75% a year below RPI inflation although the gap has widened in the past few years.

CPI inflation stood at 3.5% in March 2012, down from a peak of 5.2% in September 2011. That fall reflected the effects of earlier increases in energy prices and VAT dropping out of the twelve-month inflation rate.

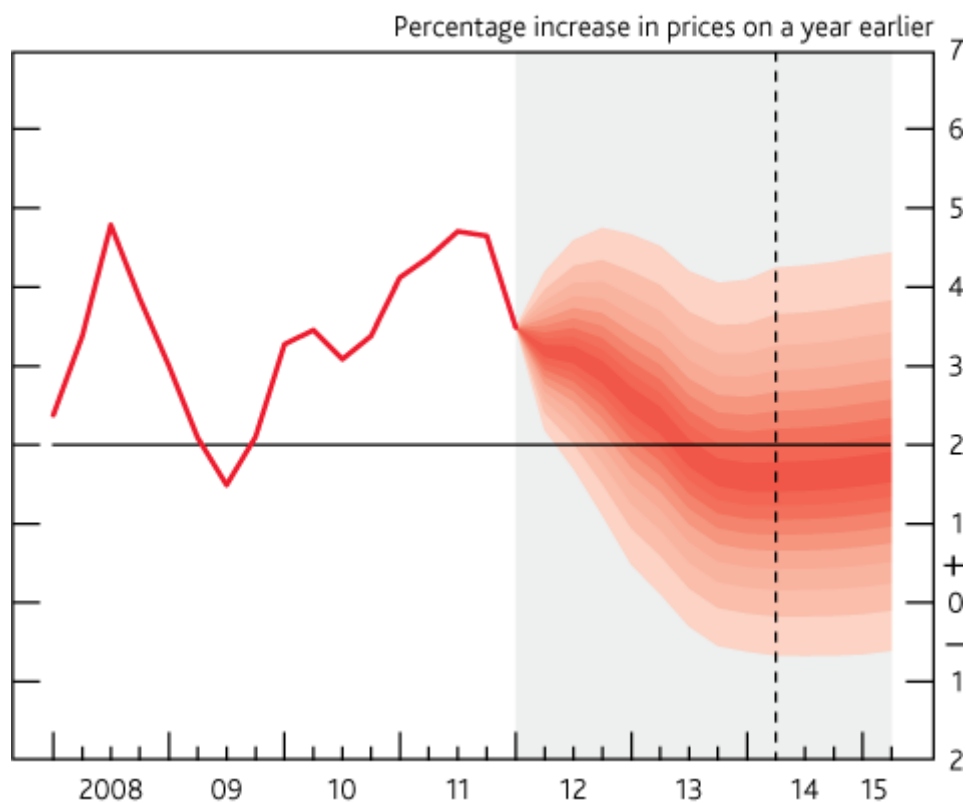


SOURCE: WWW.TRADINGECONOMICS.COM | UK OFFICE FOR NATIONAL STATISTICS

Short and long term forecast

The near-term outlook is judged to be somewhat lower than expected, with inflation now likely to remain above the 2% target for the next year or so. This revision reflects both the impact of energy prices and indirect taxes, and also a judgment that cost pressures from past rises in commodity prices and weak productivity are likely to have a greater impact on inflation in the near term than expected three months ago. A gradual easing in the impact of external price pressures and a continuing drag from economic slack should cause inflation to fall back to around the target of in the second half of the 2012/13 forecast period.

You will see from the graph below that the forecast for inflation for the year ahead has the greatest probability in the 2.5% to 3% range – hence the darker the red the greater the consensus on where inflation is heading.



4. Share performance and economic outlook

Pension Practitioner has secured the services of an economic research provider to provide a review of the markets in 2011/12 and an assessment for 2012/13.

This outlook is completely independent in its focus and should not in isolation be the basis in which to make a financial decision. Please refer to your financial advisor for further advice before making any investment decision. The views expressed do not represent the views of Pension Practitioner .Com as we are not regulated to provide financial advice.

The material has been sourced from a number of areas, including the IMF 2012 Outlook report, Goldman Sacks Financial Outlook, and Industry respected individuals such as George Soros and Professor Peter Sheen.

Stock Market Performance in 2011/12



The FTSE 100, which is an index of the 100 largest public listed companies on the London Stock Exchange is also a useful barometer for measuring the state of the country and market confidence. The FTSE hit the dizzy heights of 6900 in January 2000 and since this time it could be said that we are in a persistent bear market. The current market crisis hit the western economies in 2008, any hopeful recovery in stocks prices were short lived. For example, in 2010 the FTSE 100 rose 10%, but lost those gains by early 2012. This pattern has repeated itself in previous years.

Despite this condition, there were some strong performers in 2011; the top four FTSE 100 movers are listed below:

| <u>Name</u> | <u>1 Year Chg</u> | <u>2 Year Chg</u> | <u>3 Year Chg</u> | <u>5 Year Chg</u> |
|----------------------|-------------------|-------------------|-------------------|-------------------|
| Intertek Group | 35.37% | 94.56% | 147.74% | 196.14% |
| Bunzl | 34.80% | 46.69% | 103.52% | 47.31% |
| Rolls-Royce Holdings | 34.73% | 40.03% | 143.96% | 65.15% |
| Next | 34.46% | 48.68% | 99.08% | 44.30% |

Are UK stocks and shares generally going to go up?

Since 2000, we have had two major corrections, the first trigger was the over-valuation of technology stocks (remember lastminute.com!) and the second most recent a collapse of asset prices. The former was brought about by rising levels of personal debt and a leveraging of assets with an inflated valuation basis.

If you believe history, a third and final correction is due and the same group of economists who forecasted the current market turmoil believe that we are no more than 50% through the current "cycle". Further corrections could still be due as the collapse in asset prices has still not reduced the level of debt. If you invest in overseas markets, the correction is likely to impinge on growth in emerging markets such as Latin America. To highlight this, the IMF expects growth in Latin America and the Caribbean to moderate to about 3¼% in 2012, from about 4½% last year.

On the contrarian side, stocks look cheap relative to bonds and as the table above shows investment in certain stocks such as Intertek Group would have given you a return on your money of 35% over 12 months to April 2012; money therefore continues to be made in the UK and overseas stock markets but with careful stock selection.

Are government bonds a safe haven?

The capital markets are the source in which debt is traded and raised by Governments and firms. Countries like Singapore and China who have been buying much of the bonds issued by European banks feel that weaker countries such as Greece, Spain, and Ireland pose a greater default risk and therefore the interest rate that these countries can borrow at increases.

In the short term, "safe" countries such as Germany and to some extent the UK have seen their borrowing rates reduce. UK Government bonds yields are likely to remain low in 2012, despite bank downgrades which also means that pension income rates will stay low. If you are drawing a pension, the yields by which your pension is assessed will remain unchanged at best. UK Government bond yields may however rise if our economy does not start showing some real growth; as there will be a lack of market confidence and questions will arise on debt serviceability.

Pension funds can invest in UK and overseas government bonds through a variety of methods. The most popular method of investing in UK government bonds is via Post Office bond issues. Members of the public can also buy gilts directly from the Debt Management Office at gilt auctions. Current post office issues give a return of a little over 3% on 1 year investments. Building society bonds which carry a higher risk are yielding an extra 0.5% return on average for 1 year issues.

As bonds are a form of debt, this takes us to commercial borrowing rates. The outlook on commercial borrowing rates for 2012 is that the cost for banks borrowing in the wholesale market will increase – which will be passed on to retail customers, such as trustees of pension schemes purchasing and refinancing commercial property.

Cash returns on deposits remains low, but to assist you and your advisor in finding the best rates for cash, we have produced a list of the current gilt prices and yields plus the top 10 bank and building society rates for pension bank accounts which are appended to this report; a live feed update will appear on Pension Schemes Online. We use Investec Bank for pension scheme bank accounts, who give one of the strongest for returns on cash deposits for 6, 9 and 12 month terms.

Commercial Property

Property is a lagging indicator; as it takes time for prices and market confidence to feed into the property sector. With this in mind, rental yields are expected to continue to fall in 2012 and are unlikely to improve in 2013 but properties in prime location with good covenants will continue to remain firm. There remains an oversupply of commercial units in many areas, and the retail sector will continue to be hard hit. Reduced spending power by consumers is feeding into declining retail prices in most areas.

This is borne by the present yields on property – which are:

| | Initial yield | 20 Year Average |
|------------|----------------------|------------------------|
| Retail | 6.0% | 6.3% |
| Office | 6.0% | 7.3% |
| Industrial | 7.1% | 7.9% |

Source: IPD, FT, Property Data. IPD and matching data as at end January 2012.

Pension Schemes Online contains a rolling list of all current and property auctions over the next 6 months; together with property auction results plus direct access to commercial mortgage firms.

5. Newsletter

Our Services

Make full use of your pension plan! A SSAS is a powerful tax planning tool which can be used alongside your company to help save thousands of pounds in tax.

Pension Practitioner.Com not only administer pension schemes but we also undertake a variety of special projects which we can tailor to your needs. The following are examples of bespoke work we have carried out for clients that could potentially also help you and your business too:

- We have drafted documents ensuring large employer pension contributions above the annual allowance of £50,000 receive tax relief.
- If an individual or business owns an asset, it may be contributed into the pension scheme and tax relief can be obtained on the payment. These contributions are classed as in-specie transfers. For example, a company may transfer part or all of a commercial property (even a mortgaged premises) to your SSAS and may receive corporation tax relief on the transfer. This solution is a very tax efficient way of contributing into a pension scheme, whilst keeping cash in the business.
- We have set up staff pension schemes (full occupational pension schemes) where there are more than 11 employees. A SSAS is limited to 11 members so alternative arrangements have to be considered with more than this number.
- We have prepared unique scheme rules and configured amendments to trust documents depending on our client requirements.
- We are able to structure an arrangement whereby pension funds can be used for residential property purchase facilitated via a debenture. Under this structure the loan is not restricted to a 5 year term. Ordinarily, a pension scheme cannot hold an interest in residential property as it is deemed to be a taxable investment.
- We have several pension schemes investing in copyright/trademarks and other intellectual property. Provided that the intellectual property does not have a predictive lifespan of less than 51 years, it may be an acceptable investment by the SSAS. For instance, a royalty licence can be transferred or purchased by the SSAS from your company with any future royalty payments reducing your business corporation tax bill.

This list is not exhaustive; we would love to hear about any potential ideas you have in connection with your pension scheme. We would enjoy any challenge to help protect and secure your investments, increasing your wealth for the future and keeping your SSAS as tax efficient as possible.